

KMT Waterjet Cutting Pumps

STREAMLINE PRO[®] III 90,000psi/60hp



MAXIMUM POWER
MAXIMUM PERFORMANCE

FASTEST CUTTING**

**The PRO-III 90,000psi/60hp pump will significantly increase cutting productivity by 50 - 70% over industry standard 60,000psi/50hp cutting speeds

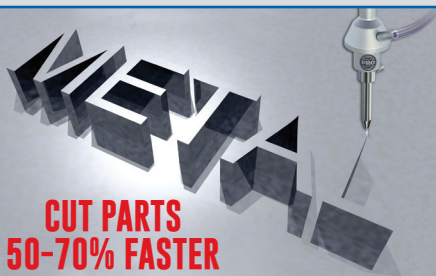


Shown with Optional Redundant Intensifier

Industry Standard
60,000psi/50hp
Single Head Cutting



PRO-III 90,000psi/60hp
Single Head Cutting



NUMBER OF CUTTING HEADS	ORIFICE SIZE	@PSI
1	.011"	90,000

Key Pump Features and Options Include:

Proven Technology The **PRO-III** pump uses technology that has millions of operational usage hours

High Pressure Intensifiers 90,000psi Topworks (Deadhead)

Horsepower Selection 60hp

Top Cover Guard Interlock Design Meets EN ISO13849-1 Safety Performance Standard PLa rating (Optional)

IE3 and NEMA Premium Motor Design Optimized motor efficiency, reduced electrical consumption

Siemens PLC Based Electrical Panel Universal design for global network support

Redesigned Electrical Panel Separation of High Voltage & Low Voltage sections to meet IEC/EN 60204-1 Standards

The Right Pump Matters



PRO³ SPECIFICATIONS

DESCRIPTION	UNIT	60
Motor Rating	kW/HP	45/60
Pressure Range (Deadhead)	PSI	90,000
Max. Flow Rate at Max. Pressure (60 Hz)	gal/min	0.78
Length	in	83.7
Width	in	53.7
Height	in	59.3
CUTTING WATER CIRCUIT		
Attenuator Volume	Liter	1.6
Cutting Water Inlet Pressure	PSI	35-85
Min. Cutting Water Inlet Flow	gal/min	4.0
Low Pressure Filter	µm abs.	10
CONTROLS & ELECTRIC		
Nom. Current at 480V/60Hz (Full Load Amp)	A	70
HYDRAULICS		
Hydraulic Tank Capacity	gal	48
Oil Level and Temperature Control		Sensor
STANDARD FEATURES		
Adjustable Booster Pump		
Cutting Water Inlet Shut-Off Valve		
Dual Pressure Setting		
Oil Drip Pan		
Dump Valve		
Water Cooled Heat Exchanger		
Cover		
Doors		
High Pressure Transducer		
OPTIONAL FEATURES		
Air Cooled Heat Exchanger		
Motor Rewind for 575v & CSA		
Proportional Control		
Redundant Intensifier		
Soft Start/Electronic/Y-Delta		

NOTE: Applies to all pumps:

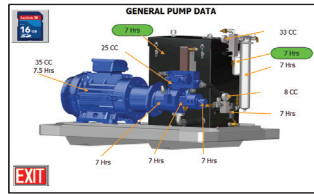
Min. pneumatic air pressure 86 PSI
 Max. pneumatic air flow rate 1 SCFM
 Ambient temp. @ Oil-to-Water cooling circuit 41 - 106 °F
 Ambient temp. @ Oil-to-Air cooling circuit 41 - 86 °F

The KMT PRO-III 60 Pump is the BEST solution for manufacturers requiring higher performance and outstanding value.

NEW! Siemens PLC Based Electrical Panel



The Home Screen displays the operating status of the machine and provides access to a series of setup and monitoring screens.



Harmonized PLC Platform NEW Touch screen is software updateable, offers 11 languages, optional gauges, and includes monitoring hours and cycle times for preventive maintenance. Standard systems offer Ethernet and USB Port with import/export capabilities.

NEW! KMT Waterjet Cut Calculator



KMT Waterjet now offers a Cut Calculator APP that compares 90,000psi to 60,000psi cutting.

Increase Productivity @ 90,000psi!



THE HEART OF WATERJET CUTTING

KMT Waterjet Systems Inc.
 635 West 12th Street
 Baxter Springs, KS 66713 USA
 620-856-2151 • 800-826-9274
 sales@kmtwaterjet.com

kmtwaterjet.com

